

SUMMARY OF ACTIVITIES ON THE NIGERIAN STOCK EXCHANGE

Report Date ➔

Tuesday, July 6, 2021

Today, NGX extends its bullish run with NGX-ASI gaining 0.52% to see benchmark index edge higher to close at 38,418.04 points

Key Market Indicators		Today	Previous Day	% Change
The All-Share Index appreciated by 0.52%	Index	38,418.04	38,220.01	↑ 0.52%
Total market cap. appreciated by 0.50%	Market Cap. (N'tm)	20.02	19.92	↑ 0.50%
Total volume traded increased by 2.23%	Trade Volume (mn)	288.92	282.62	↑ 2.23%
Total value traded increased by 29.40%	Trade Value (N' mn)	2,418.52	1,868.98	↑ 29.40%

Best Performers	Open (NGN)	Close (NGN)	% Gain
MAYBAKER	4.04	4.43	9.65%
UAC-PROP	0.94	1.03	9.57%
TOTAL	145.00	158.40	9.24%
CHIPLC	0.65	0.71	9.23%
UPL	1.52	1.66	9.21%

Worst Performers	Open (NGN)	Close (NGN)	% Decline
ETERNA	7.50	6.77	-9.73%
LINKASSURE	0.85	0.77	-9.41%
UNITYBNK	0.62	0.57	-8.06%
VETGRIF30	16.86	15.90	-5.69%
WAPIC	0.59	0.56	-5.08%

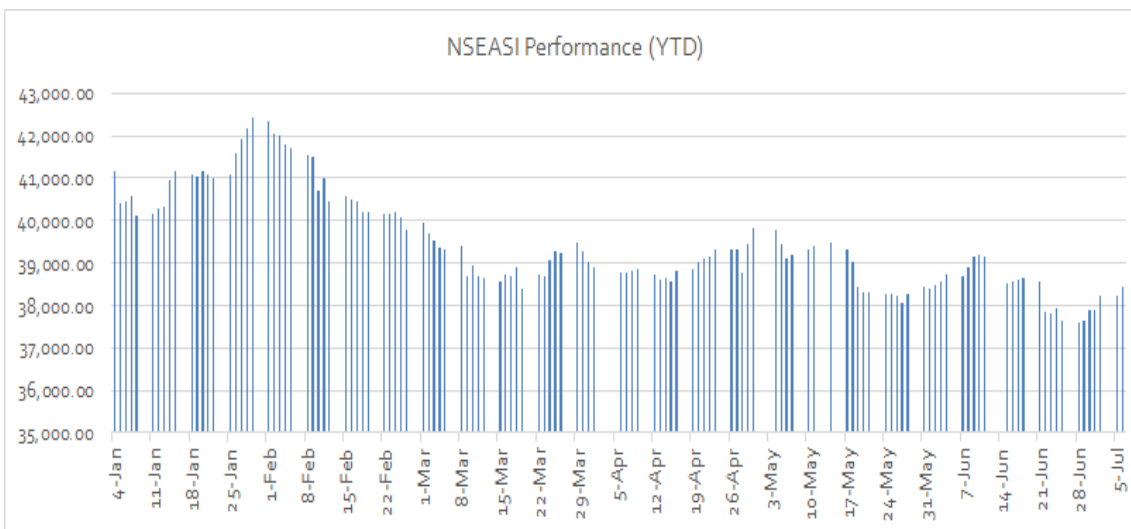
Top Trades By Volume	Sector	Volume (Units)	Mkt. Volume
FIDELITYBK	Banking	42,067,889	14.59%
FBNH	Banking	32,405,396	11.24%
UBA	Banking	22,742,347	7.89%
ACCESS	Banking	13,757,177	4.77%
WEMABANK	Banking	11,670,022	4.05%

Top Trades By Value	Sector	Value (NGN)	% Mkt. Value
SEPLAT	Oil & Gas	418,504,977.90	17.33%
ZENITHBANK	Banking	280,972,291.20	11.63%
FBNH	Banking	242,558,212.75	10.04%
UBA	Banking	174,870,921.35	7.24%
GTCO	Banking	164,025,416.75	6.79%

NSE ASI Return Profile

Day change	↑	0.52%
WKTD	↑↑	0.54%
MTD	↑↑↑	1.35%
QTD	↑↑↑	1.35%
YTD	↑↓	-4.60%
52 Weeks High		42,412.66
52 Weeks Low		22,470.79

NSEASI Performance (YTD)



TOP GAINERS AND LOSERS

Top 10 Gainers				Top 10 Losers			
Symbol	Close Price	Chart	% Change	Symbol	Close Price	Chart	% Change
MAYBAKER	4.43		9.65%	ETERNA	6.77		-9.73%
UAC-PROP	1.03		9.57%	LINKASSURE	0.77		-9.41%
TOTAL	158.40		9.24%	UNITYBNK	0.57		-8.06%
CHIPLC	0.71		9.23%	VETGRIF30	15.90		-5.69%
UPL	1.66		9.21%	WAPIC	0.56		-5.08%
SEPLAT	750.00		7.14%	JAIZBANK	0.57		-1.72%
BERGER	9.85		7.07%	WEMABANK	0.74		-1.33%
NEWGOLD	9496.00		6.70%	TRANSCORP	0.89		-1.11%
REGALINS	0.49		6.52%	LIVESTOCK	1.88		-1.05%
UBA	7.85		5.37%	UCAP	6.33		-0.94%

TOP TRADES BY VOLUME AND VALUE

Top 10 Trades By Volume				Top 10 Trades By Value			
Symbol	Trade Vol.	Chart	% of Mkt Vol.	Symbol	Trade Value	Chart	% of Mkt Value
FIDELITYBK	42,067,889		14.59%	SEPLAT	418,504,978		17.33%
FBNH	32,405,396		11.24%	ZENITHBANK	280,972,291		11.63%
UBA	22,742,347		7.89%	FBNH	242,558,213		10.04%
ACCESS	13,757,177		4.77%	UBA	174,870,921		7.24%
WEMABANK	11,670,022		4.05%	GTCO	164,025,417		6.79%
TRANSCORP	11,581,100		4.02%	MTNN	137,084,142		5.68%
ZENITHBANK	11,453,687		3.97%	WAPCO	132,242,335		5.48%
UNIVINSURE	11,182,164		3.88%	ACCESS	124,703,181		5.16%
HONYFLOUR	10,061,245		3.49%	NESTLE	121,797,527		5.04%
SOVRENINS	9,647,392		3.35%	FIDELITYBK	96,624,548		4.00%

MACRO ECONOMIC SNAPSHOT

Key Indicators	Today	Previous Day	1-Day Change	YTD % Change
Exchange Rate - I & E (NGN/USD)	411.50	411.13	↓ -0.09%	↑ 4.36%
Exchange Rate - Parallel (NGN/USD)	503.00	503.00	→ 0.00%	↑ 7.02%
Montetary Policy Rate (MPR)	11.50%	11.50%	→ 0.00%	→ 0.00%
Crude Oil Price (USD/barrel) ¹	76.05	77.16	↓ -1.44%	↑ 48.85%
Foreign Reserves (Billion USD) ²	33.23	33.27	↓ -0.12%	↓ -8.18%
Inflation Rate ³	17.93%	18.12%	↓ -1.05%	↑ 10.32%

**Note : Crude oil (Brent) and Foreign Exchange price represents spot price as at the time this report was prepared

Foreign reserves figures have two-day lag

Inflation figure as at May 2021

Contact Information

Investment Research

obaanu@atlassportfolios.com |
tokunade@atlassportfolios.com
info@atlassportfolios.com

Corporate website: <https://atlassportfolios.com/>